



# **PiXL Independence:**

## **PiXL Gateway: Progression - Maths**

### **Contents:**

- I. RAG
- II. Basic Skills Check
- III. Problem Solving
- IV. Extra Practice
- V. Exciting and Interesting Bits!
- VI. RAG

## I. RAG

For each of the following topics RAG rate yourself based on what you know from GCSE. Then complete the booklet and redo at the end. Having a secure understanding of these topics will mean that you are in the best possible position to start your A Level course.

Topic	Red	Amber	Green
Solving quadratics			
Changing the subject			
Simultaneous equations			
Surds			
Indices			
Properties of lines			
Sketching curves			
Transformations of functions			
Pythagoras			
Sine/Cosine Rule			
Inequalities			
Proof			
Vectors			
Probability			

## Basic Skills Check

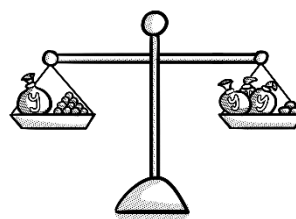
- Expand the brackets  $(2x - 4)(-4 + x)$
- Given  $f(x) = x^2 + 5x - 2$  find the value of  $f(4)$
- Solve the simultaneous equations.  

$$3x - 4y = 20$$

$$5x + 5y = 10$$

- Solve each of these equations.

- $4x - 3 = 15$
- $\frac{y}{3} + 4 = 9$
- $5m - 8 = 2m + 13$



- Simplify  $(3 + \sqrt{2})(3 - \sqrt{2})$

- Express  $\frac{1+\sqrt{2}}{3-\sqrt{2}}$  in the form  $a + b\sqrt{2}$  where  $a$  and  $b$  are rational.

$$\sqrt{a} \times \sqrt{b} = \sqrt{ab}$$

$$\frac{\sqrt{a}}{\sqrt{b}} = \sqrt{\frac{a}{b}}$$

$$(\sqrt{a} + b)(\sqrt{a} + b) = a + 2b\sqrt{a} + b^2$$

- Simplify  $\frac{(x^2y^3z)^5}{4y^2z}$

- A (0,2), B (7,9) and C (6,10) are three points.

- Show that AB and BC are perpendicular.
- Find the length of AC.

- Sketch the graph of  $y = 9 - x^2$

- The curve  $y = x^2 - 4$  is translated by  $\begin{pmatrix} 2 \\ 0 \end{pmatrix}$

Write down an equation for the translated curve. You need not simplify your answer.

- Given that  $\cos\theta = \frac{1}{3}$  and  $\theta$  is acute, find the exact value of  $\tan\theta$ .

12. Solve

(i)  $x^2 - 36 \leq 0$

(ii)  $9x^2 - 25 \geq 0$

(iii)  $3x^2 + 10x < 0$

13. Prove that the square of an odd number is also odd.

14. Caleb either walks to school or travels by bus.

The probability that he walks to school is 0.75

If he walks to school, the probability that he will be late is 0.3

If he travels to school by bus, the probability that he will be late is 0.1

Work out the probability that he will not be late.



### **Problem Solving**

1. Two numbers have a product of 44 and a mean of 7.5

Use an algebraic method to find the numbers.

You must show all your working.

2. In a parallel circuit, the total resistance is given by the formula  $\frac{1}{R} = \frac{1}{R_1} + \frac{1}{R_2}$

Make  $R_1$  the subject of the formula

3. Sarah intended to spend exactly £6.00 on prizes for her class but each prize cost her 10p more than expected, so she had to buy 5 fewer prizes.  
Calculate the cost of each prize.

4. Arthur and Florence are going to the theatre.  
Arthur buys 6 adult tickets and 2 child tickets and pays £39  
Florence buys 5 adult tickets and 3 child tickets and pays £36.50  
Work out the costs of both adult and child tickets.



5. Colin has made a mistake in his 'simplifying surds' homework. Explain his error and give the correct answer.

$$4\sqrt{3} \times 5\sqrt{12} = 20\sqrt{36}$$

6. Below is a sketch of  $f(x)$ .

The coordinates of  $P$  are  $(0, -2)$

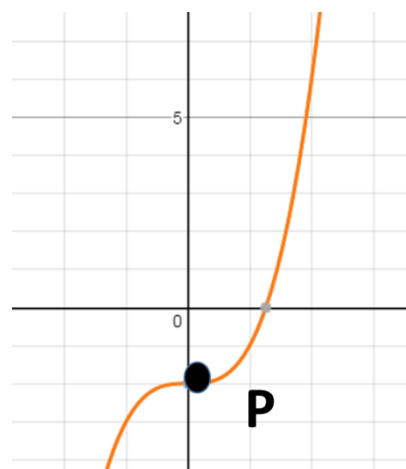
State the coordinates of  $P$  after each translation:

(i)  $g(x) = f(x) + 1$

(ii)  $h(x) = f(x - 2)$

(iii)  $j(x) = -f(x)$

(iv)  $k(x) = f(-x)$



7. The equation of a curve is  $y = f(x)$  where  $f(x) = x^2 - 4x + 5$   
 $C$  is the minimum point of the curve.  
 (i) Find the coordinates of  $C$  after the transformation  $f(x + 1) + 2$   
 (ii) Determine if  $f(x - 3) - 1 = 0$  has any real roots.  
 Give reasons for your answer.
8. A piece of land is the shape of an isosceles triangle with sides 7.5m, 7.5m and 11m.  
 Turf can be bought for £11.99 per  $5\text{m}^2$  roll.  
 How much will it cost to turf the piece of land?
9. Plane A is flying directly toward the airport which is 20 miles away. The pilot notices a second plane, B,  $45^\circ$  to her right. Plane B is also flying directly towards the airport. The pilot of plane B calculates that plane A is  $50^\circ$  to his left. Based on that information how far is plane B from the airport? Give your answer to 3 significant figures.

10. A farmer has a triangular field. He knows one side measures 450m and another 320m. The angle between these two sides measures  $80^\circ$ . The farmer wishes to use a fertiliser that costs £3.95 per container which covers  $1500\text{m}^2$ . How much will it cost to use the fertiliser on this field?

11. Katie chooses a two-digit number, where the digits are different, reverses the digits, and subtracts the smaller number from the larger.

For example

$$42 - 24 = 18$$

She tries several different numbers and finds the answer is never a prime number.

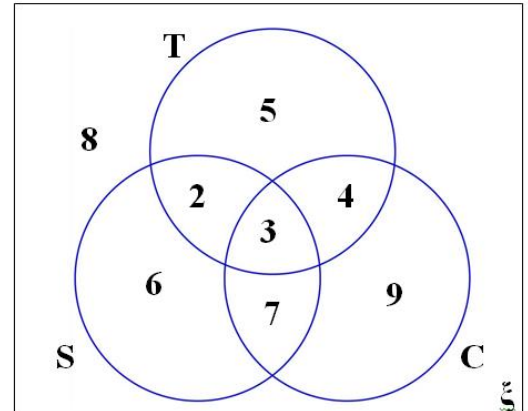
Prove that Katie can never get an answer that is a prime number.

12. The Venn diagram shows the ice-cream flavours chosen by a group of 44 children at a party.

The choices are strawberry (S), choc-chip (C) and toffee (T). A child is picked at random.

Work out :

- (i)  $P(S)$
- (ii)  $P(T \cap C | C)$
- (iii)  $P(C | S \cup T)$



## **Extra Practice**

1. **Exam style practice.** For each of the topics you should watch the video, and then answer the exam questions and mark your answers. Where have you made mistakes? Is there something you need to do more work on?

### **Algebraic fractions**

<http://www.mathsgenie.co.uk/algebraic-fractions.html>

<http://www.mathsgenie.co.uk/resources/algebraic-fractions.pdf>

### **Forming equations**

<http://www.mathsgenie.co.uk/forming-and-solving-equations.html>

[http://www.mathsgenie.co.uk/resources/64\\_forming-and-solving-equations.pdf](http://www.mathsgenie.co.uk/resources/64_forming-and-solving-equations.pdf)

2. **Complete 30 questions from the 'quadratics' section on completing the square and factorising.**

<http://www.kangaroomaths.com/kenny4.php?page=Kmathsinfinity>

3. **Watch the video and then complete the tasks at the end.**

<https://library.leeds.ac.uk/skills-algebra>

4. **Complete the A Level transition questions.**

<https://gryphonmaths.wordpress.com/a-level/transition/task-1/>

5. **Underground Mathematics**

This resource is FULL of lots of tasks and challenges. If you are feeling less confident with a topic then use the '*building block*'. If you want more of a challenge then carry out one of the '*fluency exercise*'.

<https://undergroundmathematics.org/>

## **Exciting and Interesting Bits!**

Below are some articles and videos to view.

These are all going to extend your understanding of maths in the real world.



1. **Follow the 'WATCH, THINK, DIG DEEPER, DISCUSS'**

The Wizard standoff riddle.

<https://ed.ted.com/lessons/can-you-solve-the-wizard-standoff-riddle-daniel-finkel>

2. **Follow the 'WATCH, THINK, DIG DEEPER, DISCUSS'**

Solve the false positive riddle.

<https://ed.ted.com/lessons/can-you-solve-the-false-positive-riddle-alex-gendler>

3. **Read the notes on the page and carry out the algebraic investigation. Complete the worksheet included.**

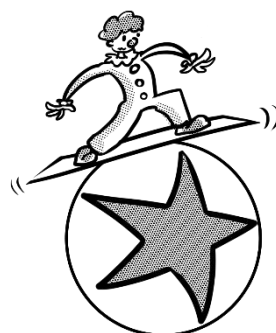
<https://www.teachmathematics.net/page/7566/oxo>

4. **Create a PINTREST board with images of maths in nature. Investigate the maths behind some of the images you have found.**

5. **Maths Magic.**

Can you create your own version of the problem? Investigate other magic tricks which are based around maths.

<https://nrich.maths.org/1051>



6. **Golden Ratio Day**

Golden ratio day is 1<sup>st</sup> June 2018. Investigate the golden ratio and its history.

[https://www.teachengineering.org/activities/view/nyu\\_phi\\_activity1](https://www.teachengineering.org/activities/view/nyu_phi_activity1)

<https://www.quora.com/How-is-the-golden-ratio-useful-to-students>

Find more articles on this and create a poster all about the golden ratio.

7. **Complete module 1- Advanced Problem Solving**

<https://nrich.maths.org/10209>



## RAG

Complete a RAG rating for the key topics from this booklet. Remember if you are still unsure on any of these topics then try the MathsApp for further help and support.

GOOD LUCK!

<b>Topic</b>	<b>Red</b>	<b>Amber</b>	<b>Green</b>
Solving quadratics			
Changing the subject			
Simultaneous equations			
Surds			
Indices			
Properties of lines			
Sketching curves			
Transformations of functions			
Pythagoras			
Sine/Cosine Rule			
Inequalities			
Proof			
Vectors			
Probability			



**© The PiXL Club Ltd. June 2018**

This resource is strictly for the use of member schools for as long as they remain members of The PiXL Club. It may not be copied, sold, or transferred to a third party or used by the school after membership ceases. Until such time it may be freely used within the member school.

All opinions and contributions are those of the authors. The contents of this resource are not connected with, or endorsed by, any other company, organisation or institution.

PiXL Club Ltd endeavour to trace and contact copyright owners. If there are any inadvertent omissions or errors in the acknowledgements or usage, this is unintended and PiXL will remedy these on written notification.